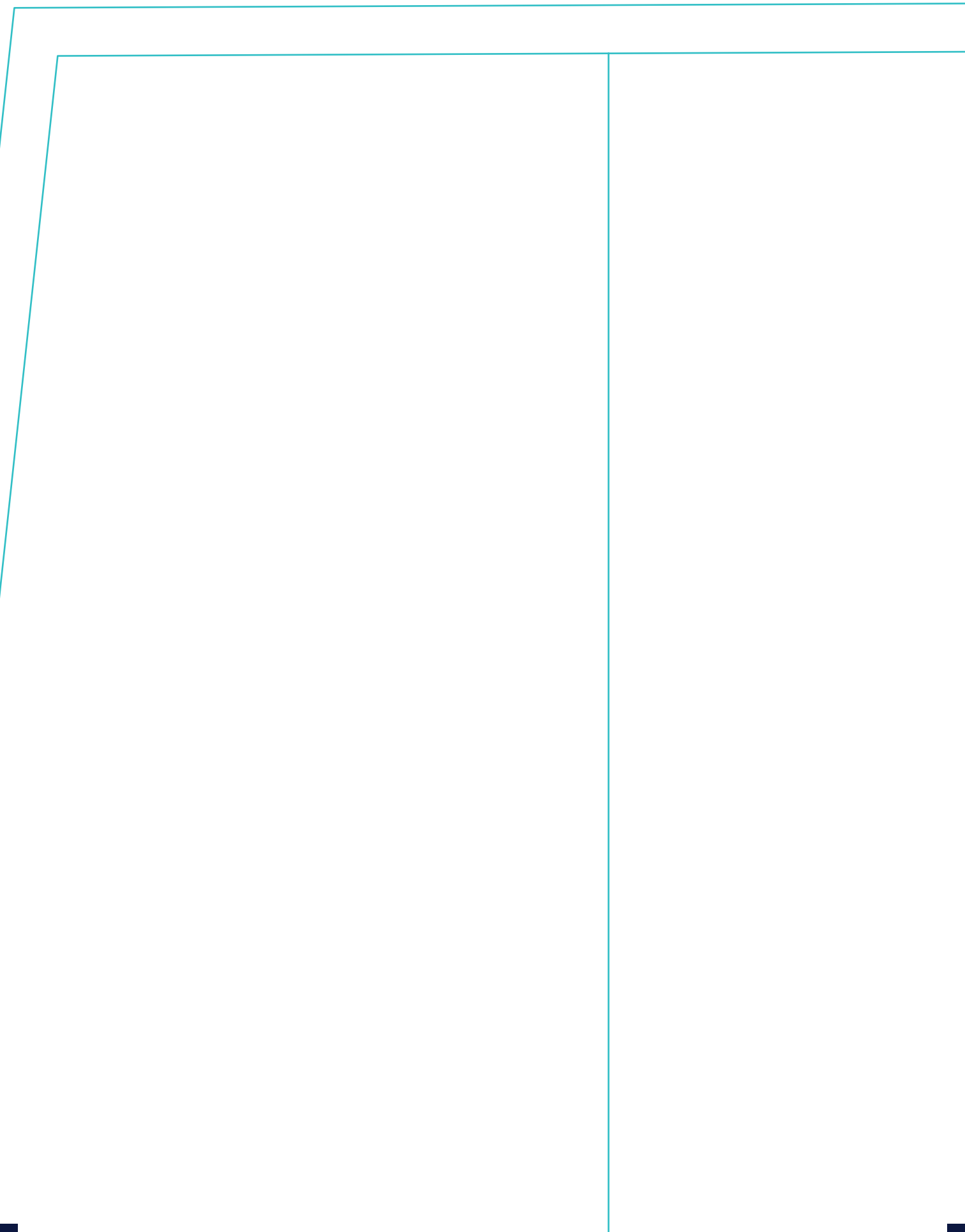
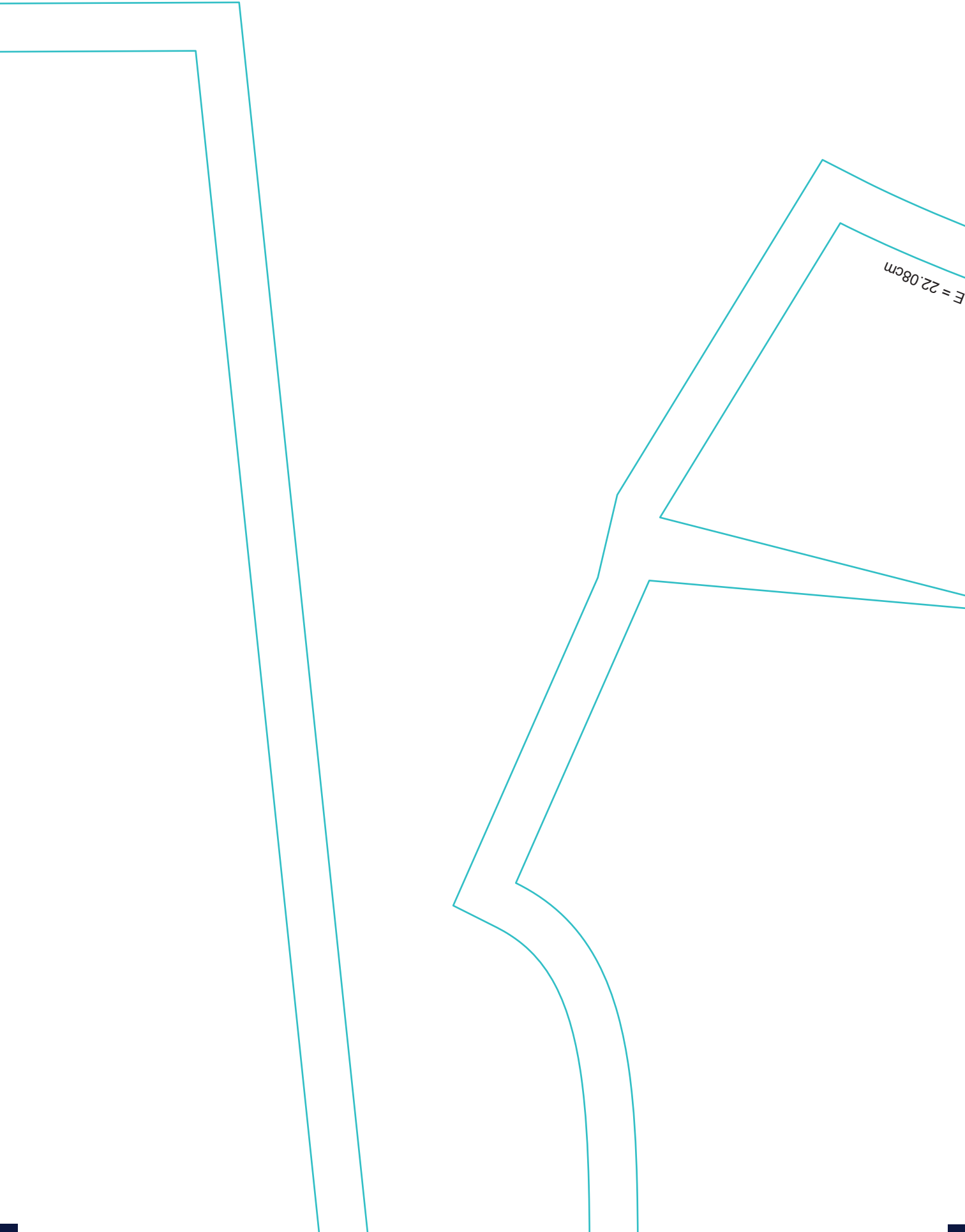


HIP

CENTER FRONT







ARMHOL

44 beden

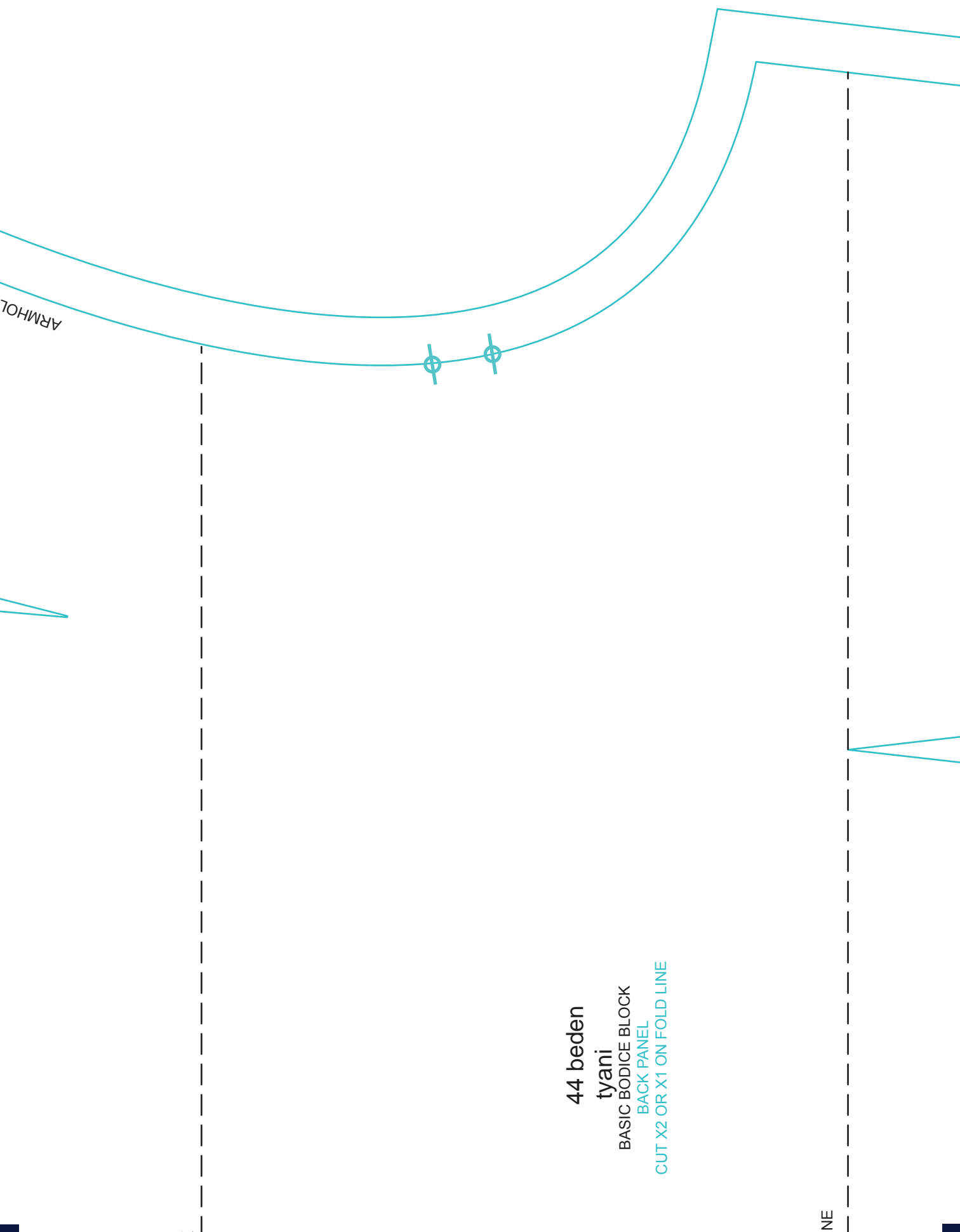
tyani

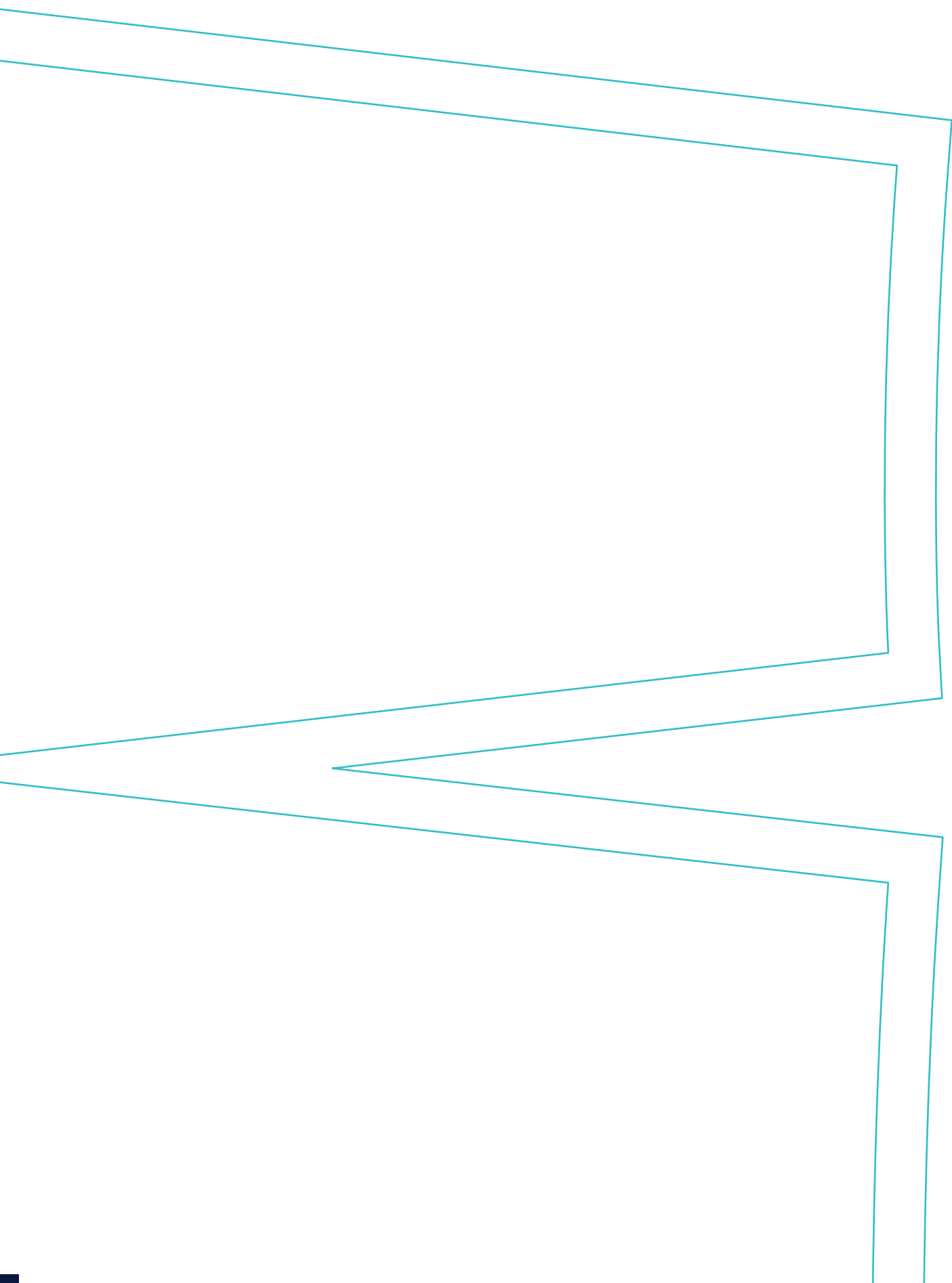
BASIC BODICE BLOCK

BACK PANEL

CUT X2 OR X1 ON FOLD LINE

NE



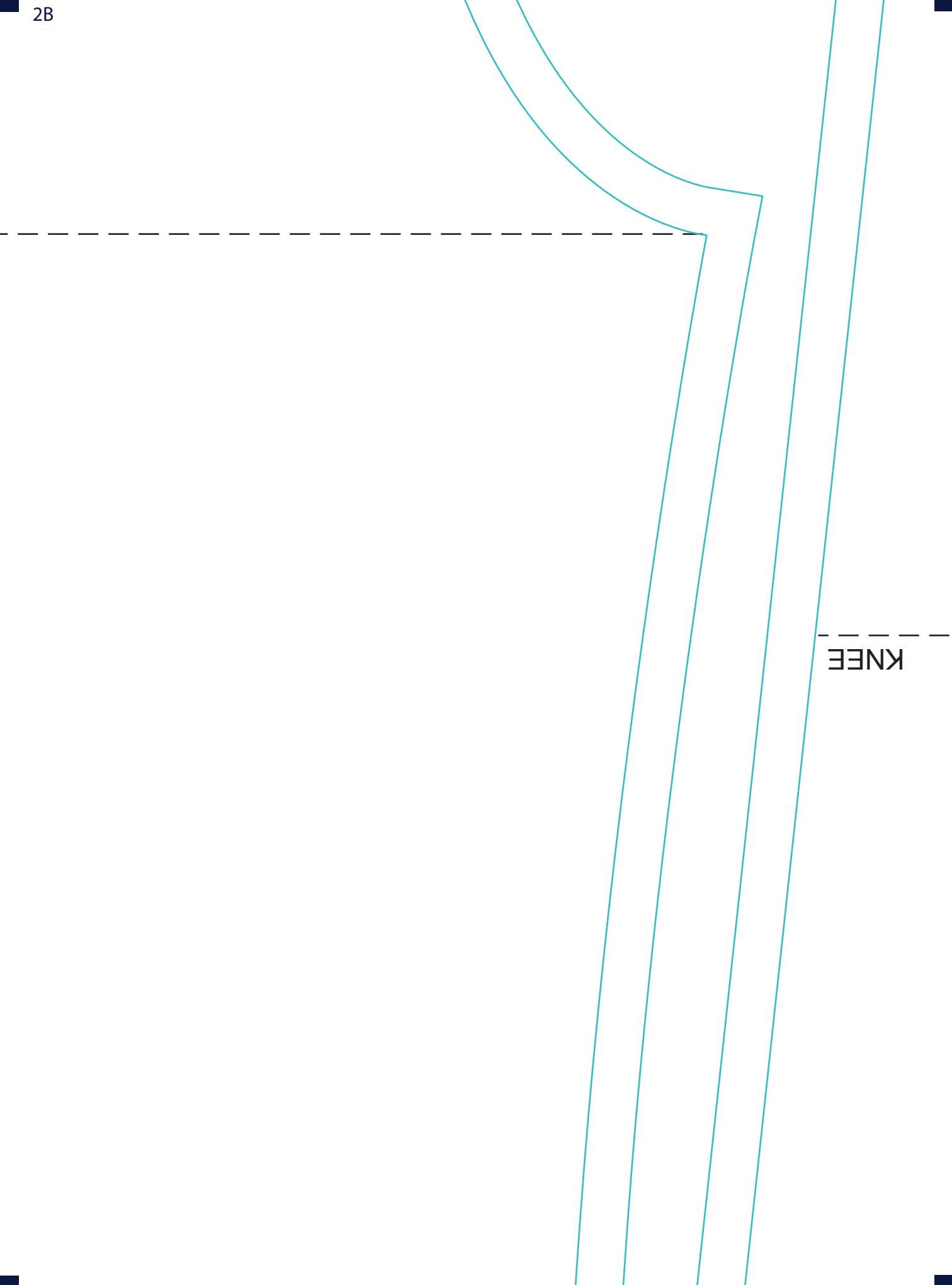


44 beden
tyani

BASIC TROUSER BLOCK
FRONT PANEL
CUT X2

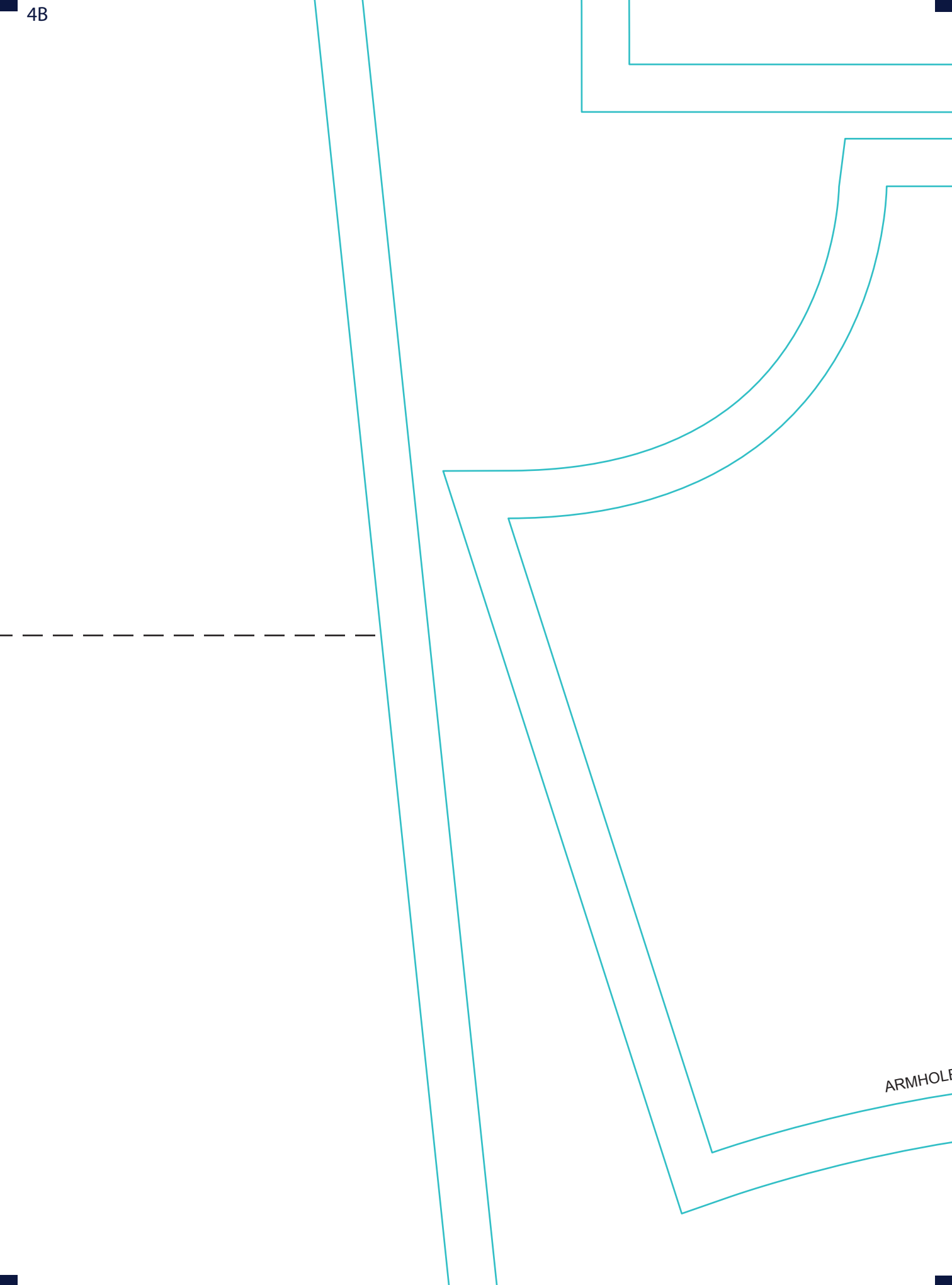
CROTCH

CREASE LINE/ GRAIN LINE



KNEE





ARMHOLE

CENTER FRONT/ FOLD LINE

44 beden
tyani

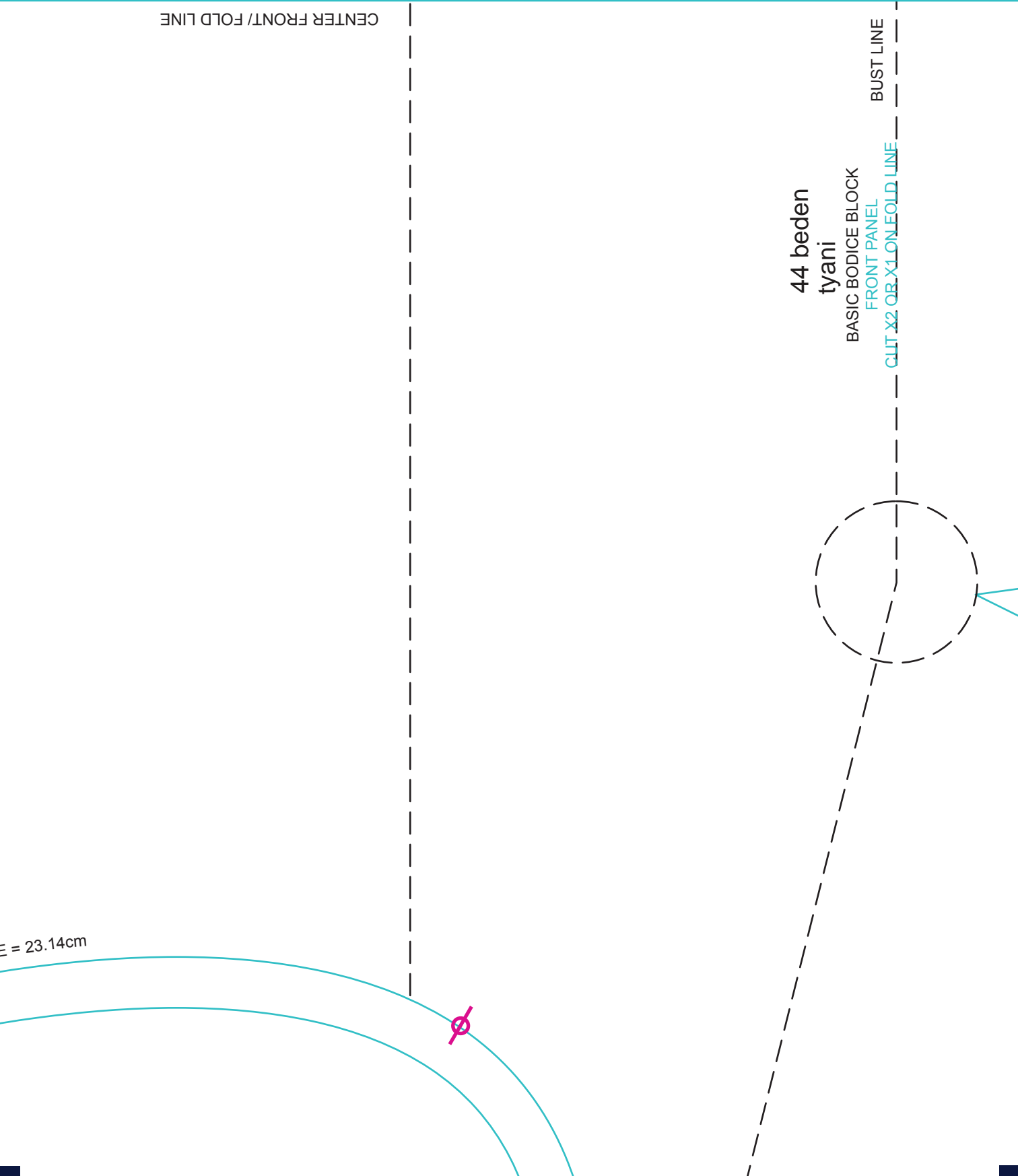
BASIC BODICE BLOCK

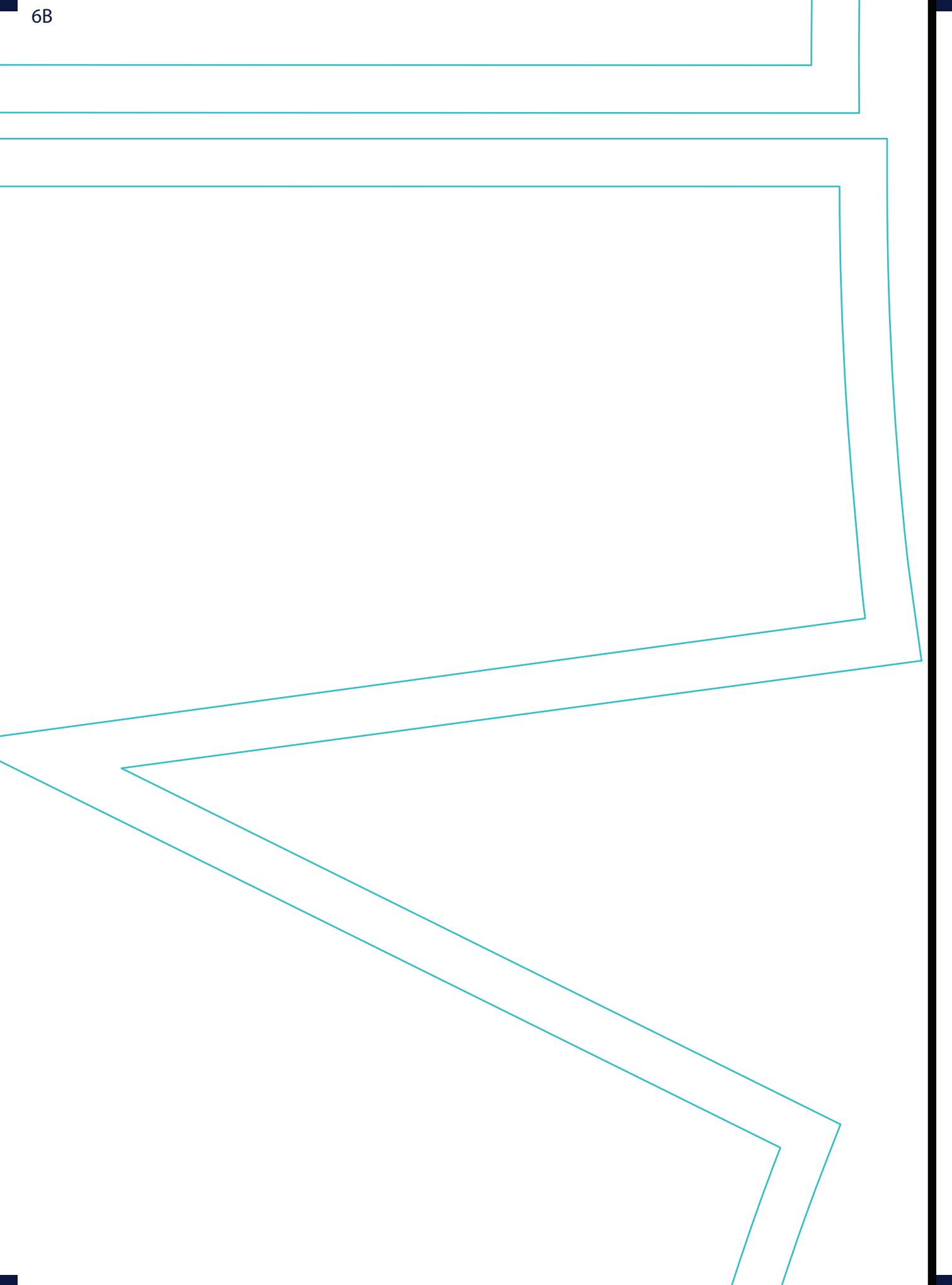
FRONT PANEL

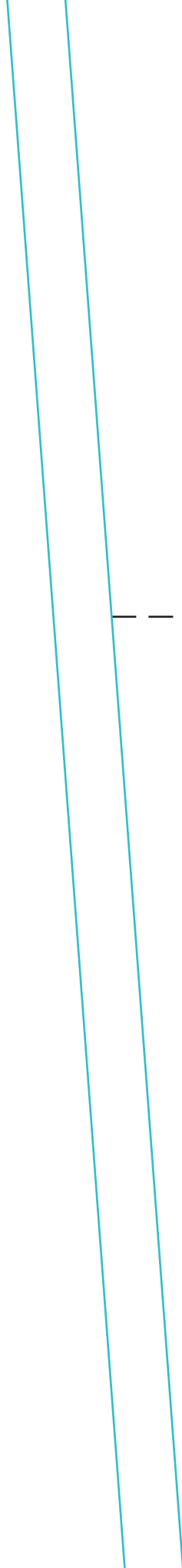
BUST LINE

CUT X2 OR X1 ON FOLD LINE

E = 23.14cm









A diagram of a human leg, oriented vertically. The leg is represented by four parallel teal lines. A horizontal dashed line crosses the leg at the knee joint, with the word "KNEE" written to its right. A second horizontal dashed line crosses the leg lower down, at the crotch area, with the word "CROTCH" written to its right.

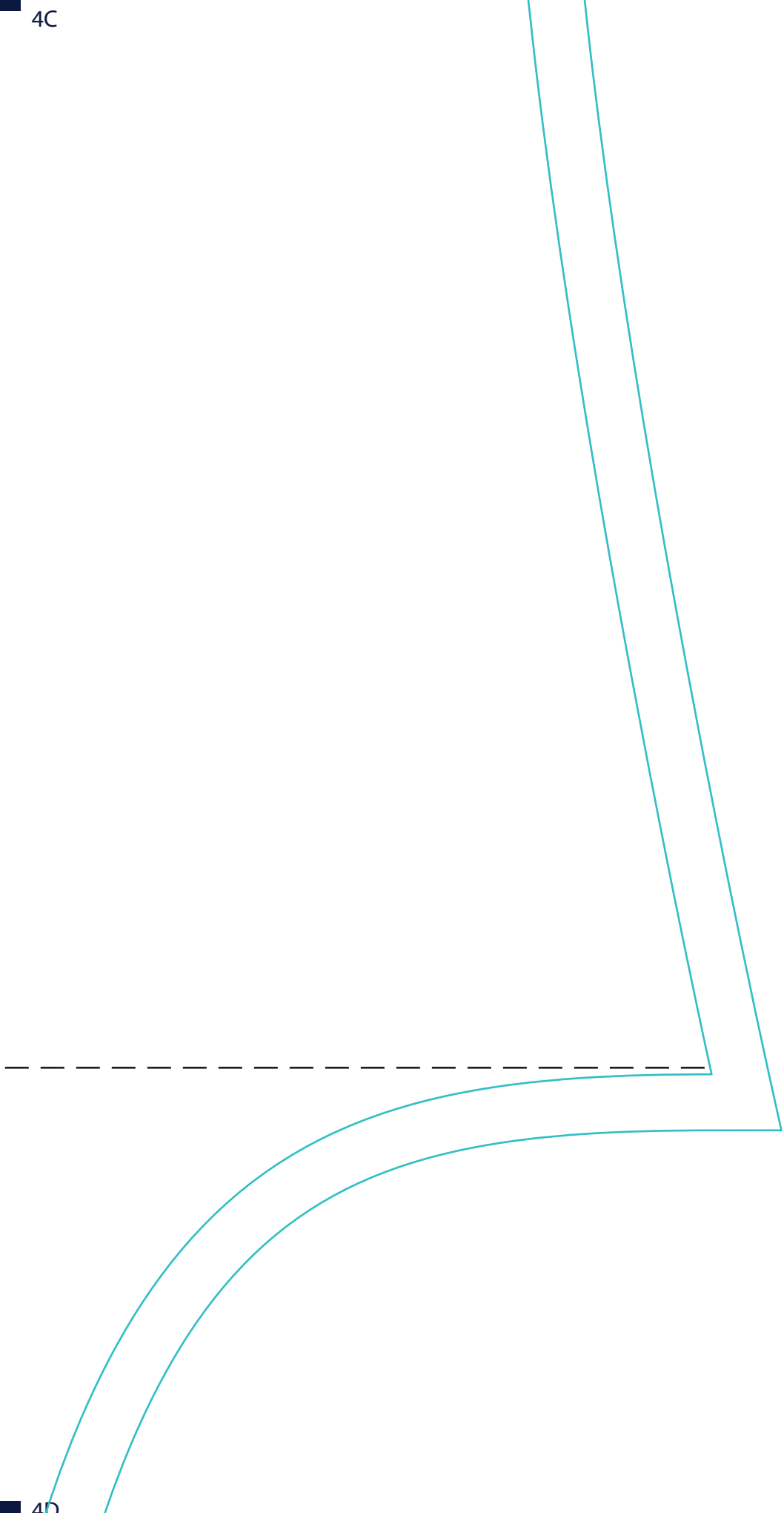
KNEE

CROTCH

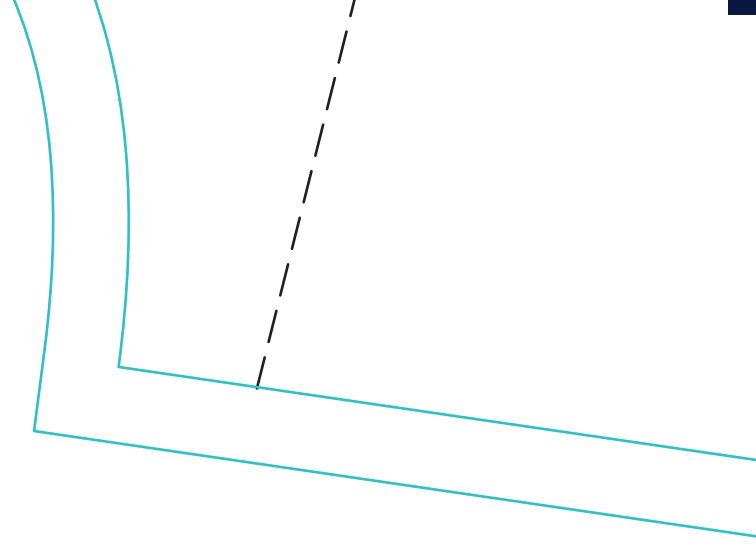
CREASE LINE/ GRAIN LINE

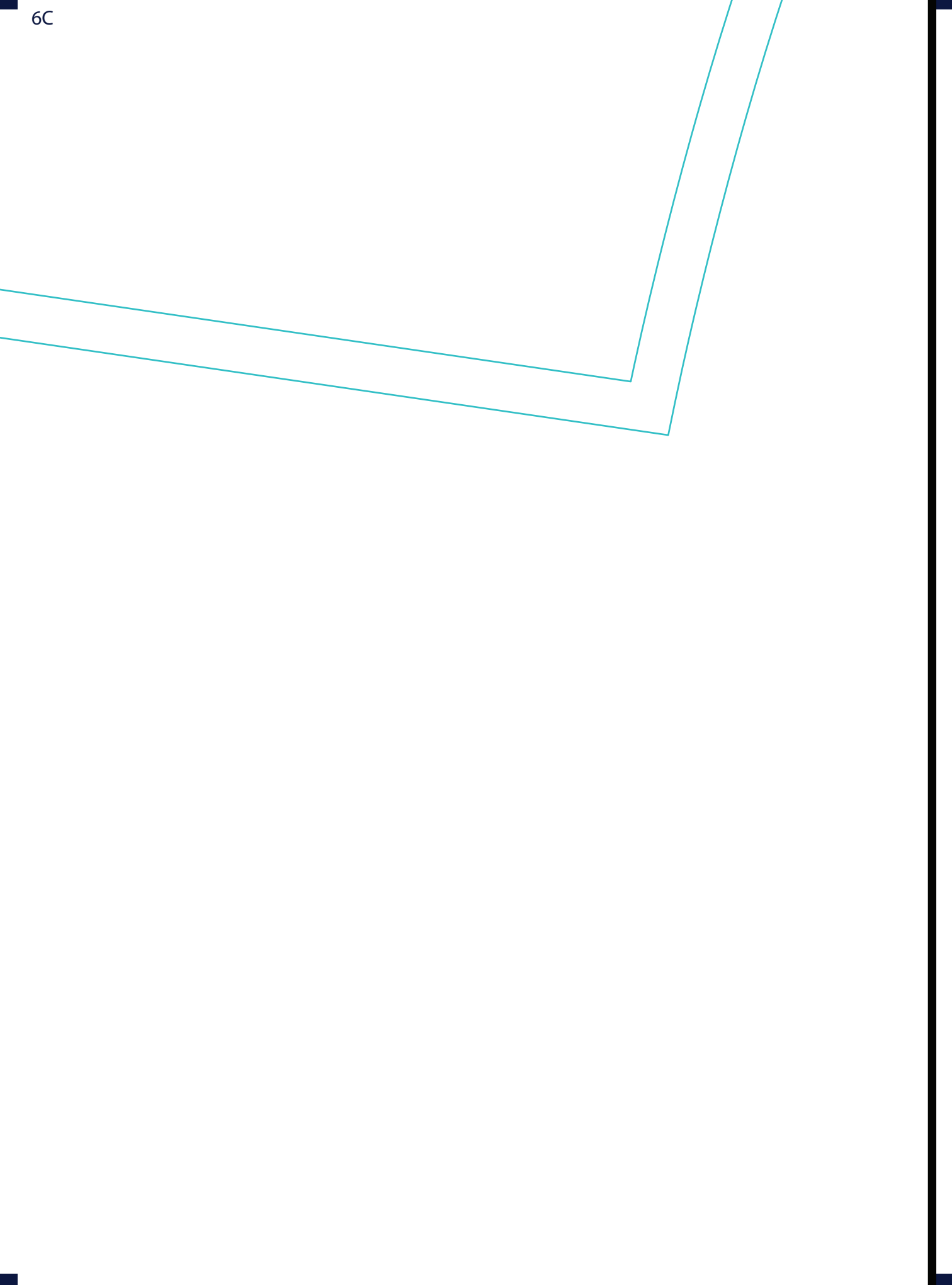
44 beden
tyani
BASIC TROUSER BLOCK
BACK PANEL
CUT X2

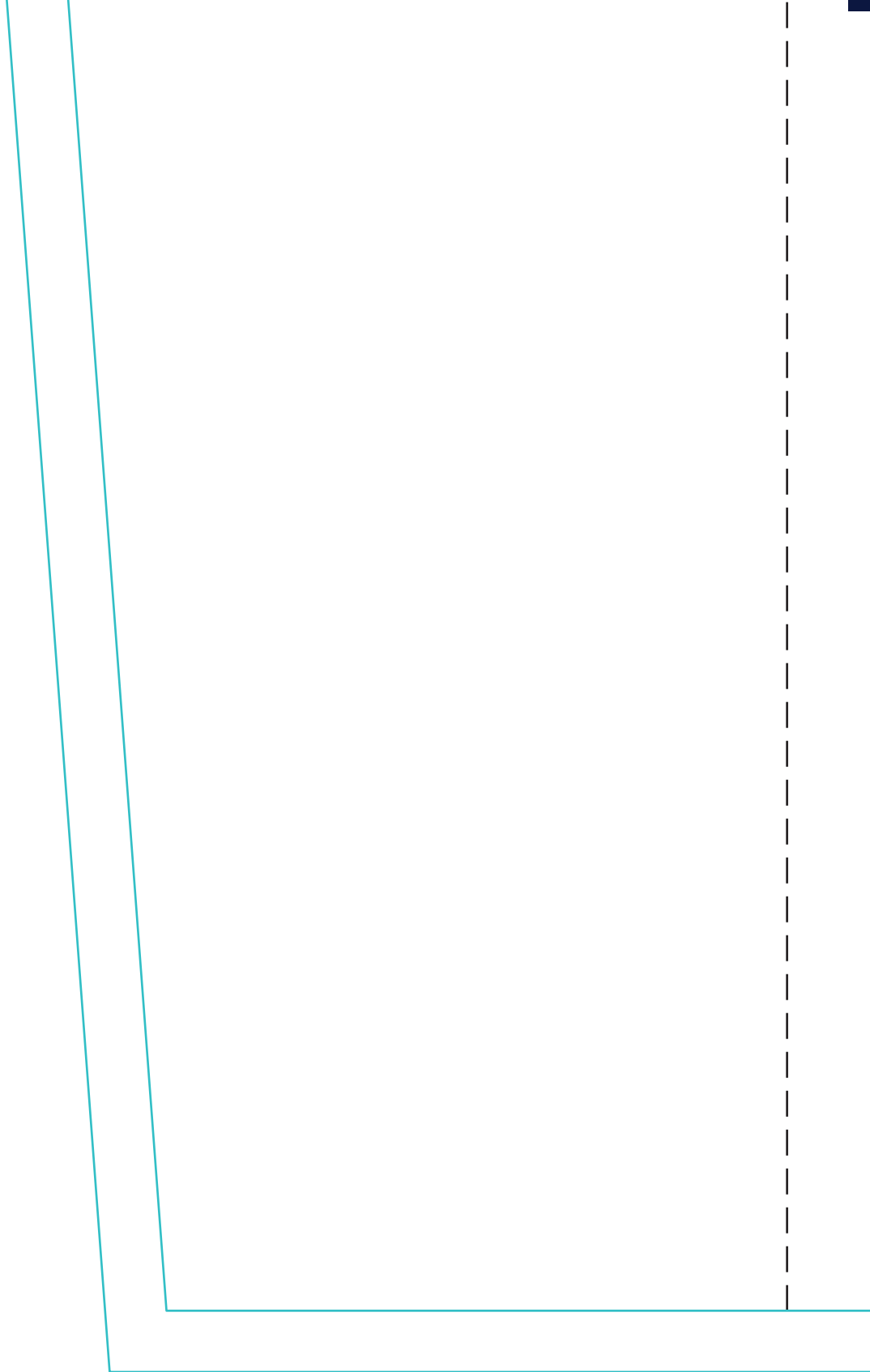
4C



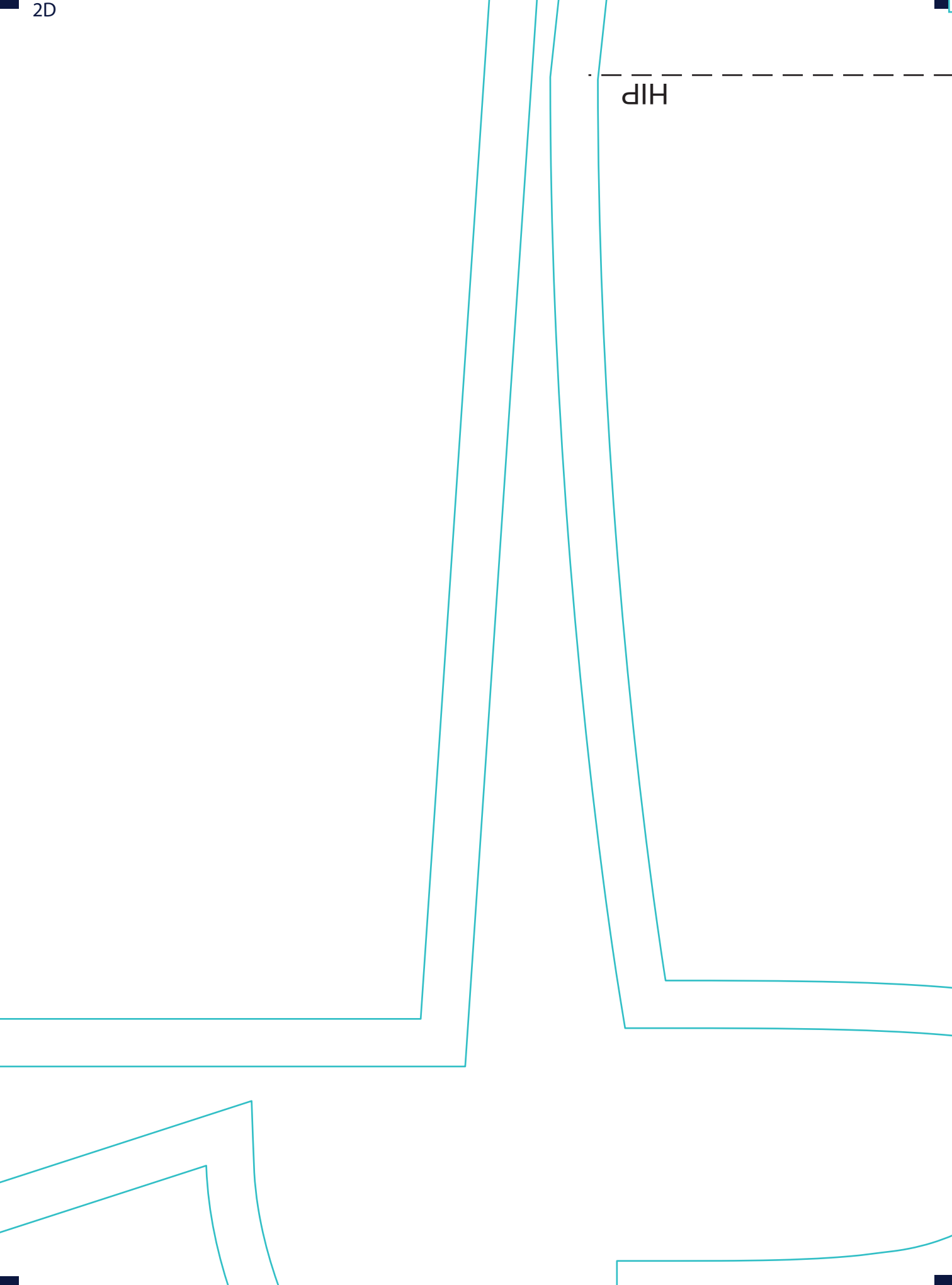
4D





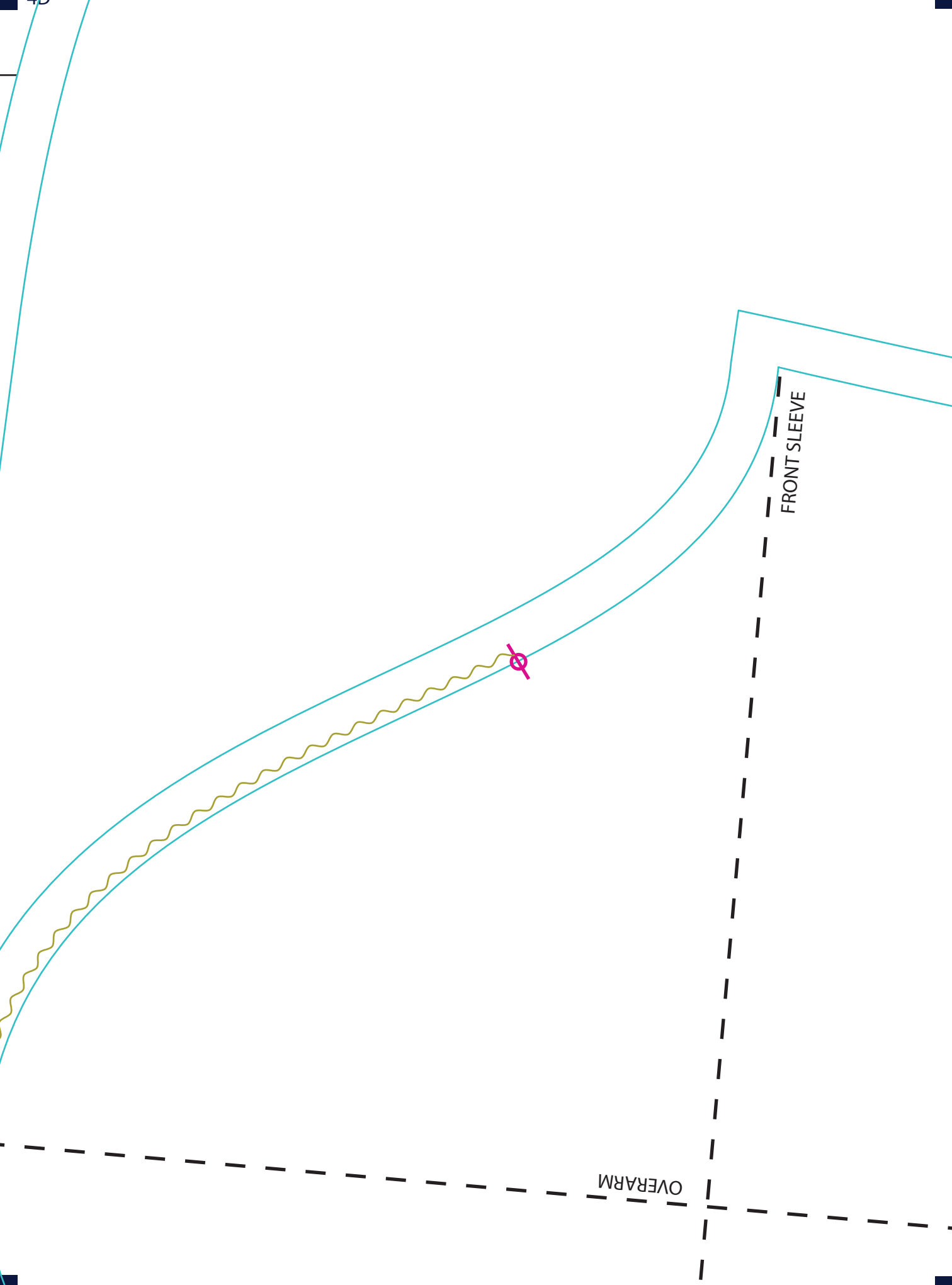


dIH



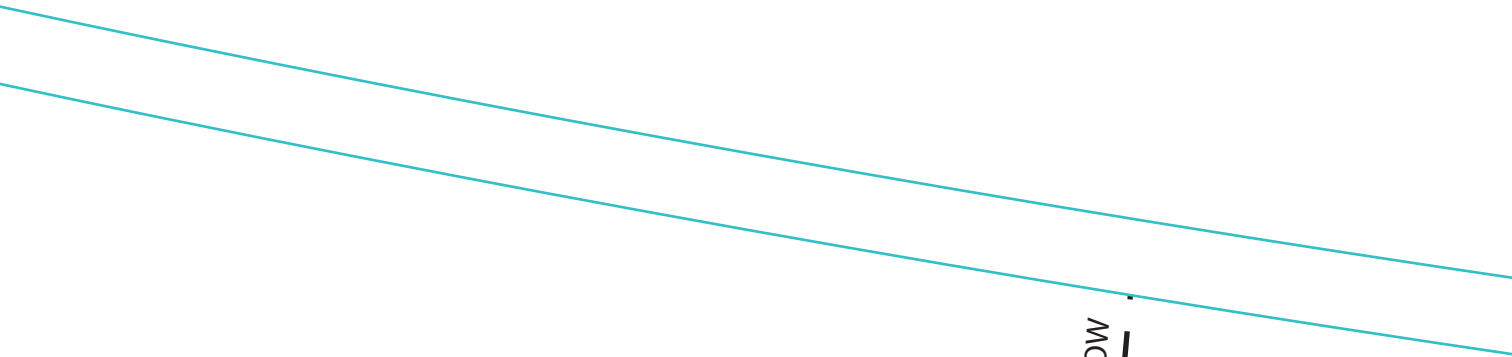


CENTER BACK



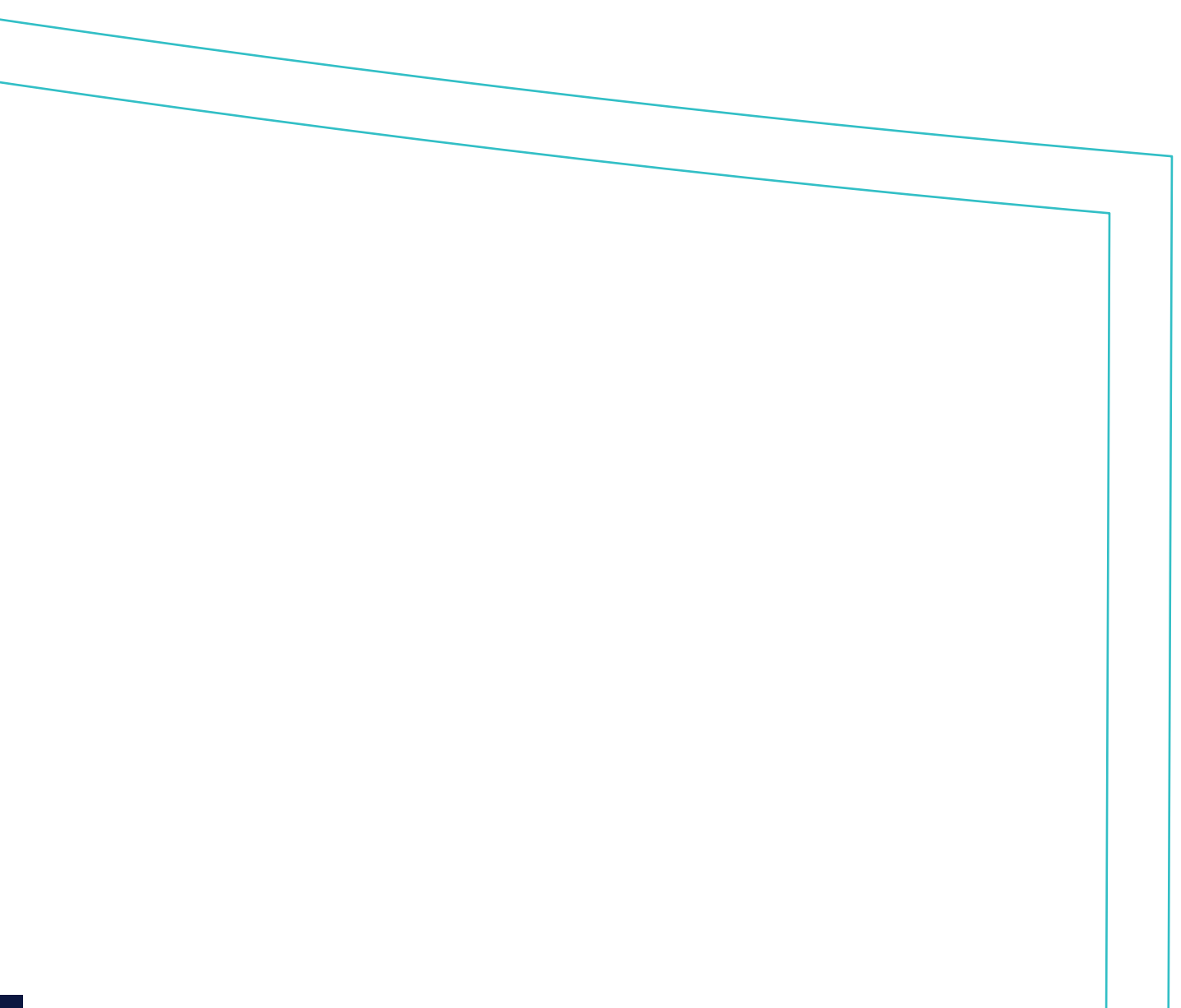
FRONT SLEEVE

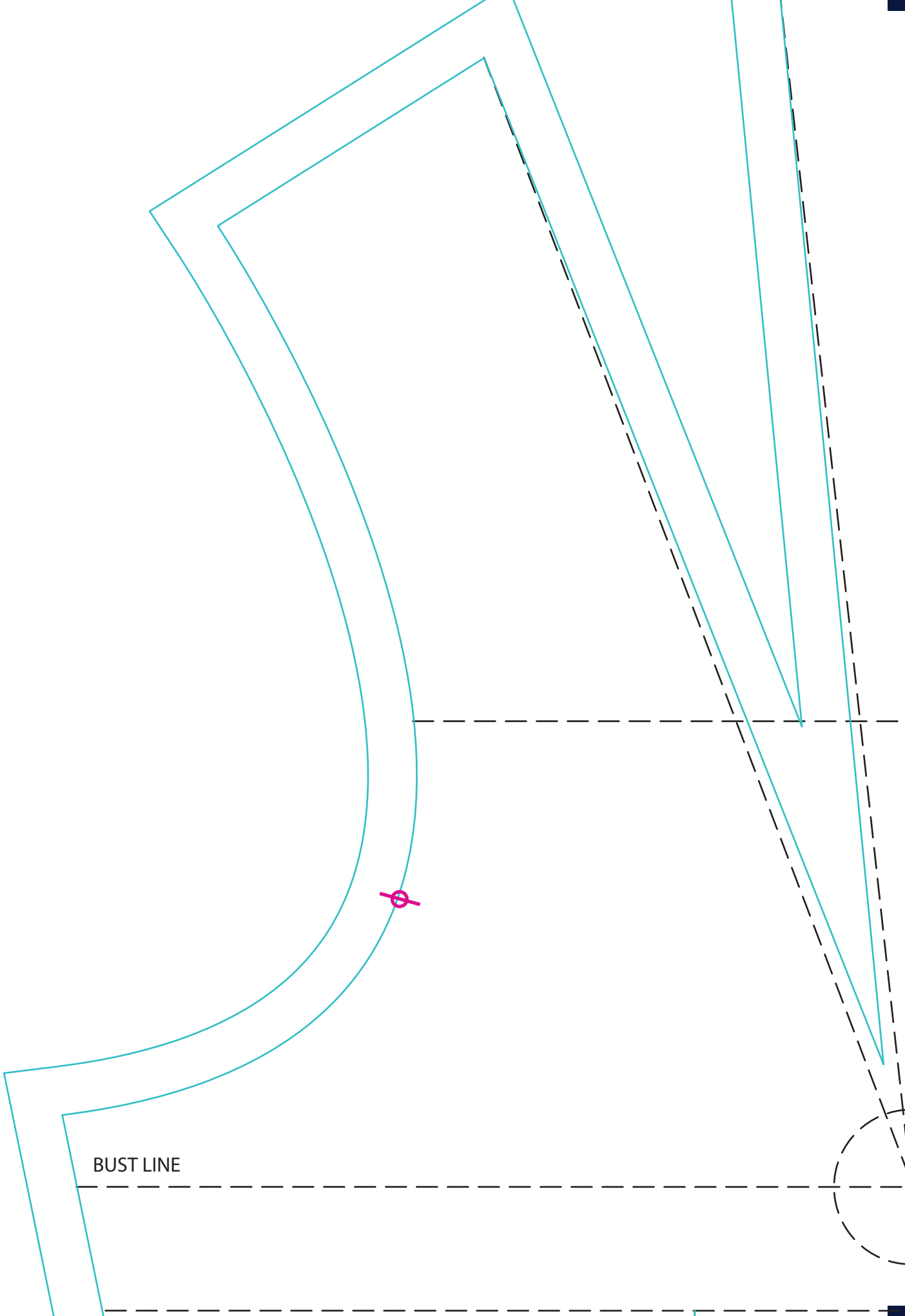
OVERARM



ELBOW







BUST LINE

44 beden
tyani
BASIC DRESS BLOCK
FRONT PANEL
CUT X2 OR X1 ON FOLD

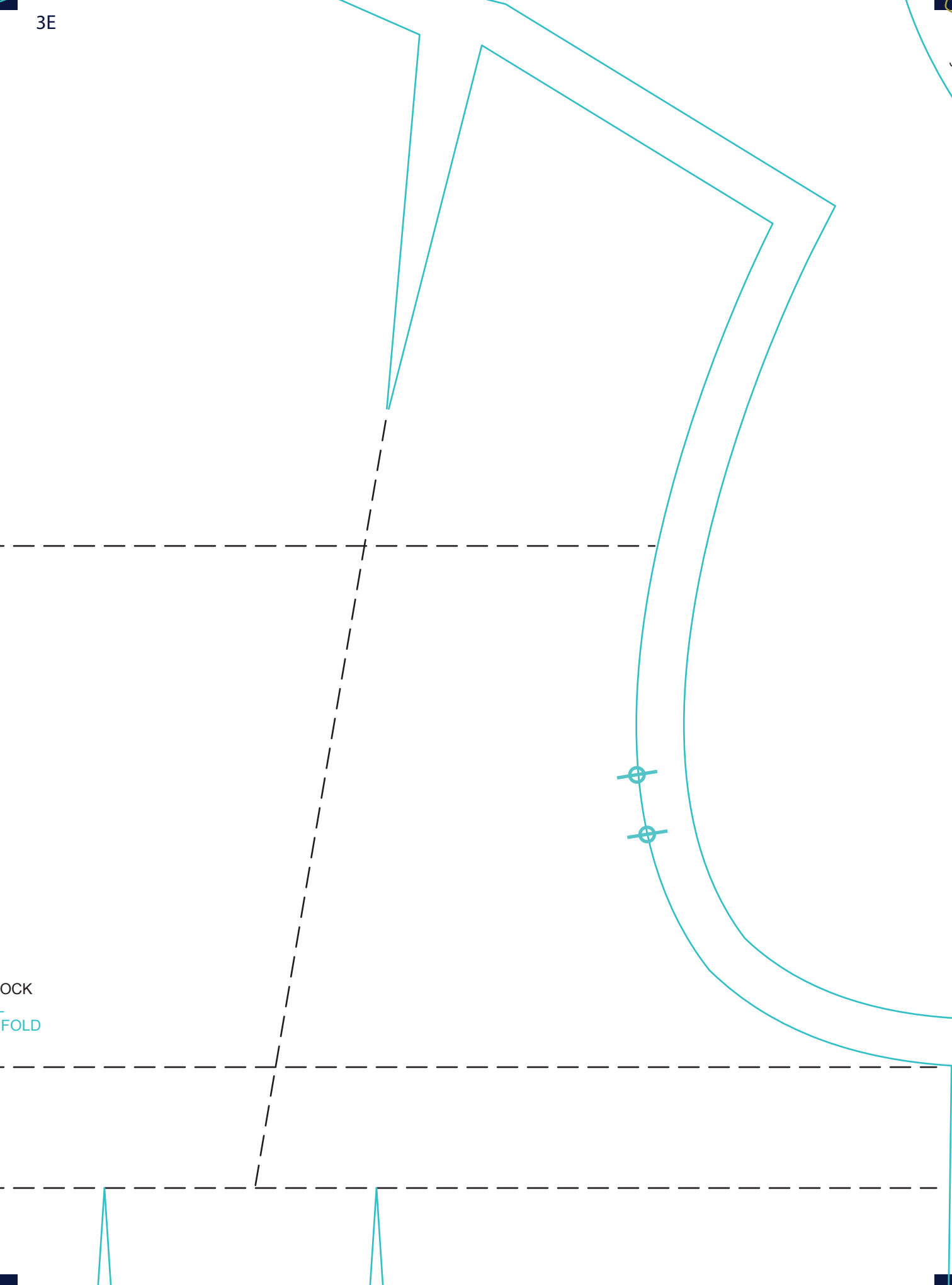
CENTER FRONT FOLD LINE

CENTER BACK FOLD LINE

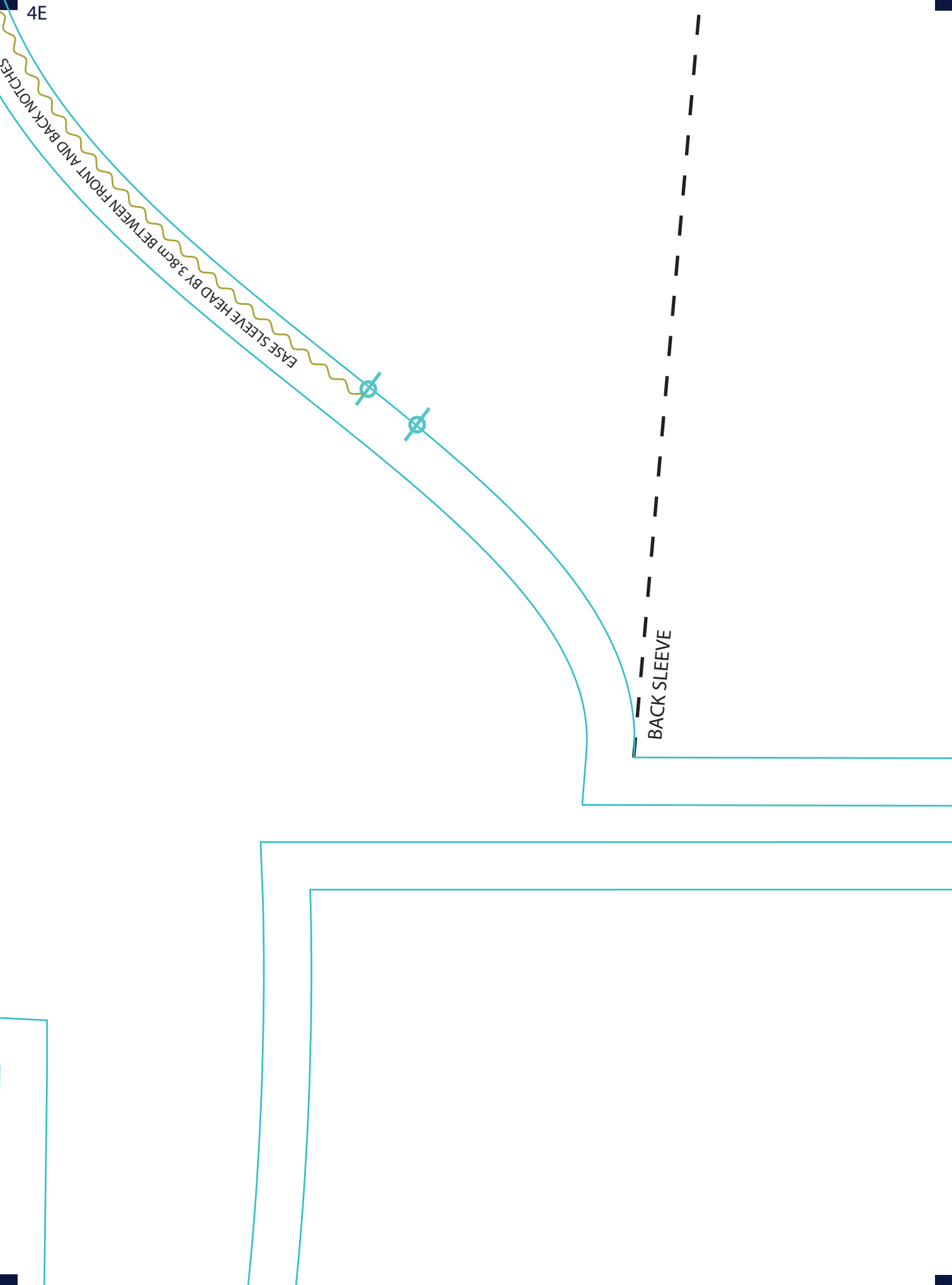
X-BACK

44 bed
tyani
BASIC DRESS BL
FRONT PANEL
CUT X2 OR X1 ON

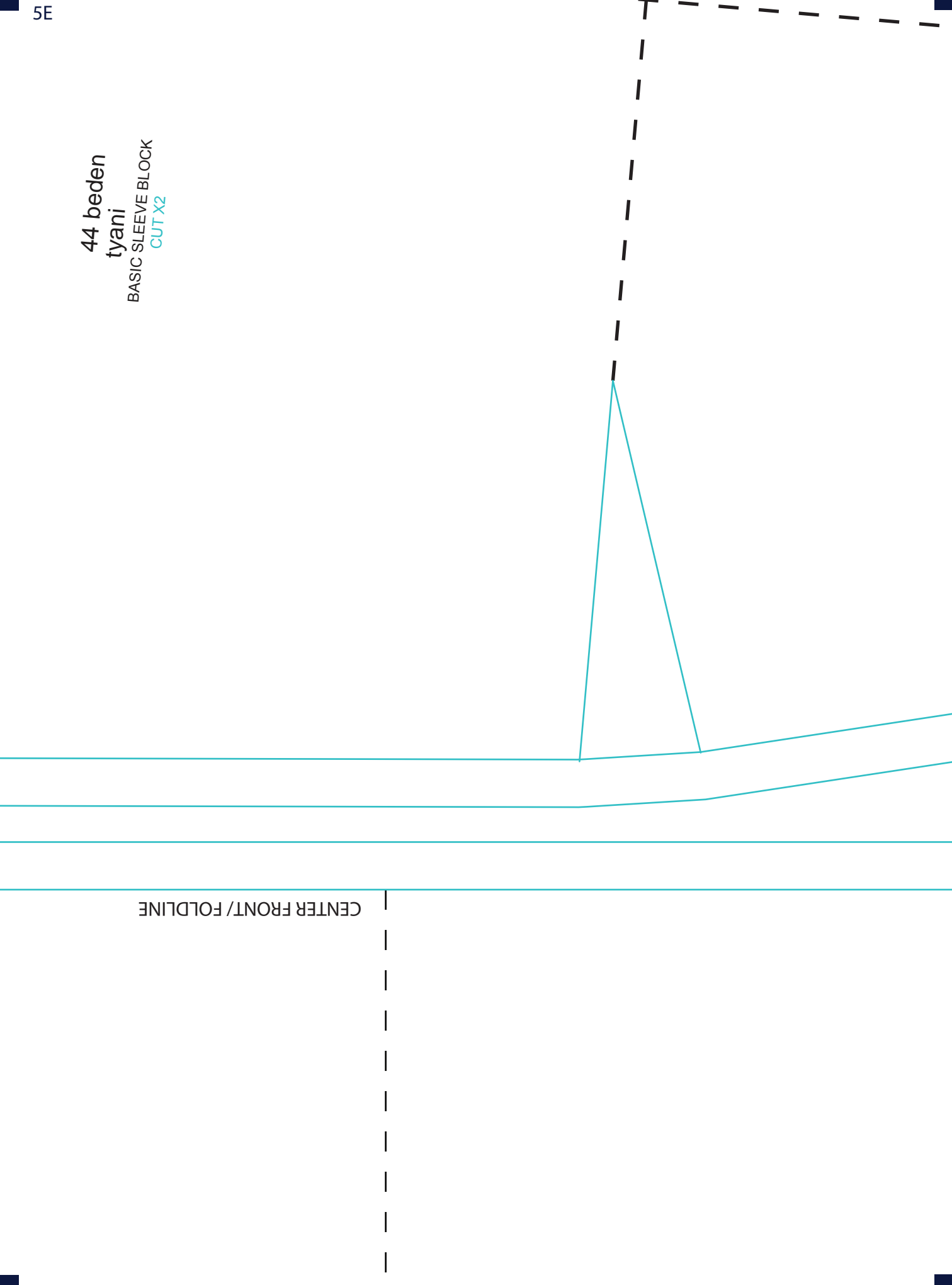
3E



LOCK
FOLD

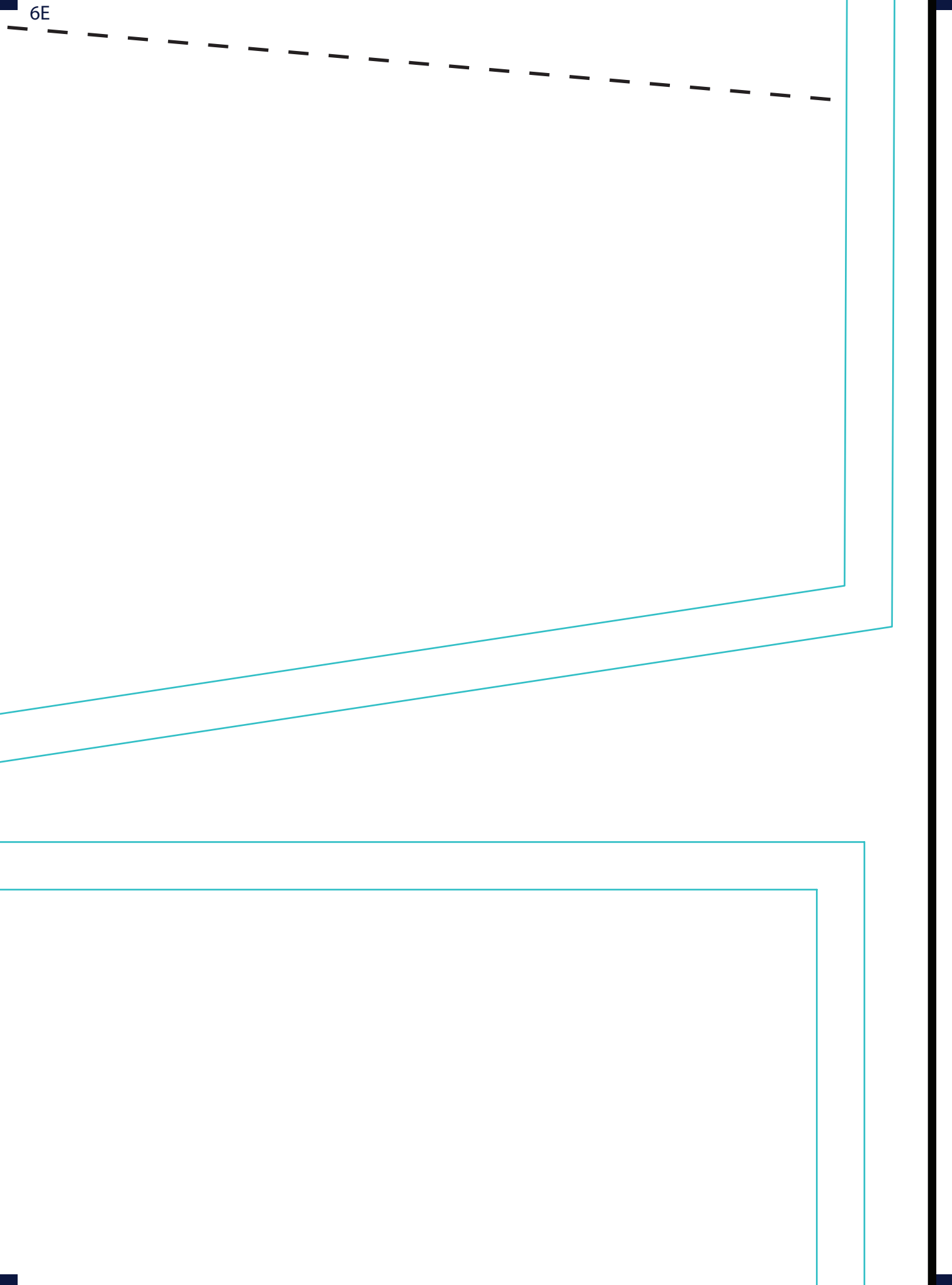


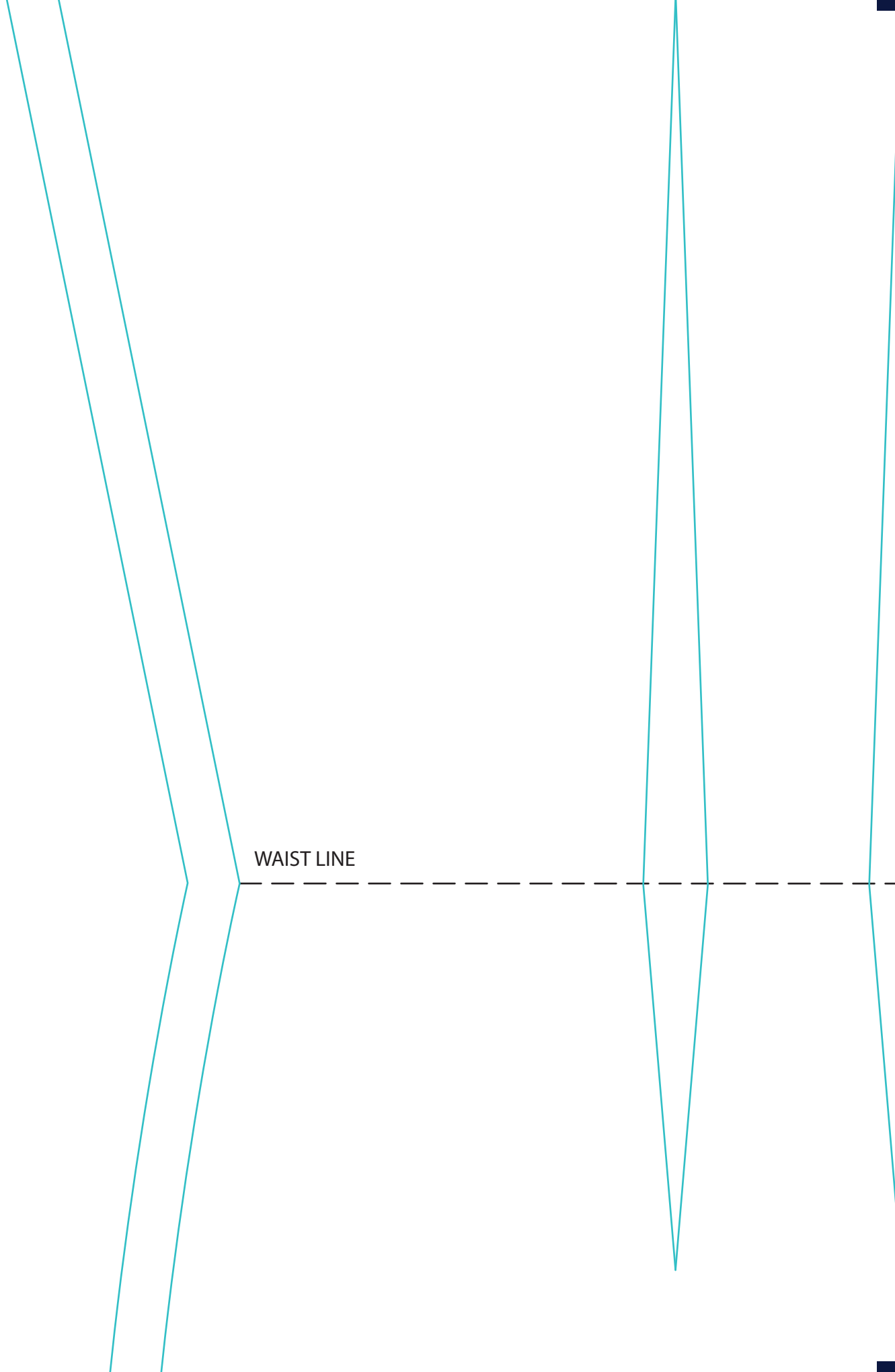
44 beden
tyani
BASIC SLEEVE BLOCK
CUT X2



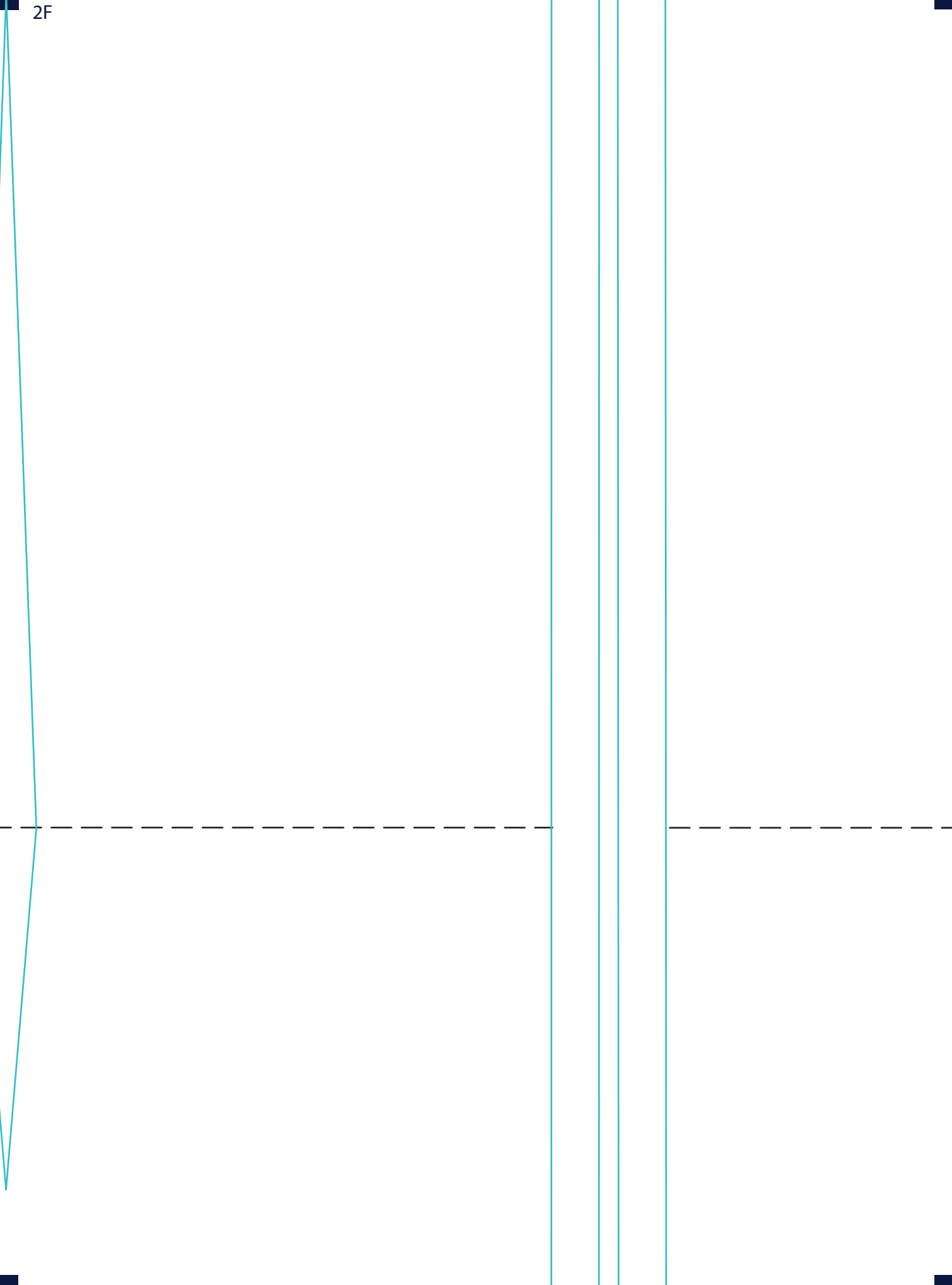
CENTER FRONT/ FOLDLINE

6E



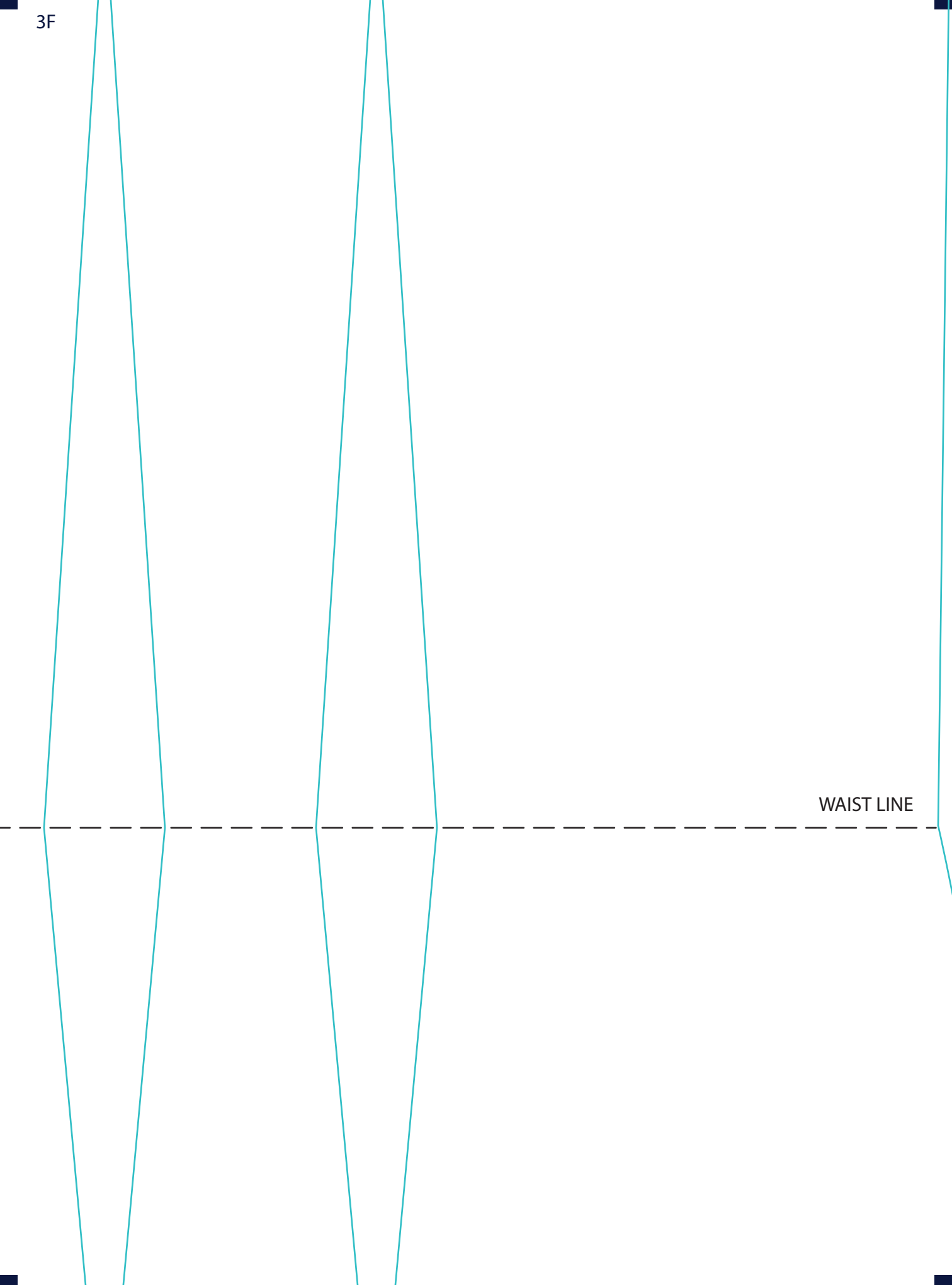


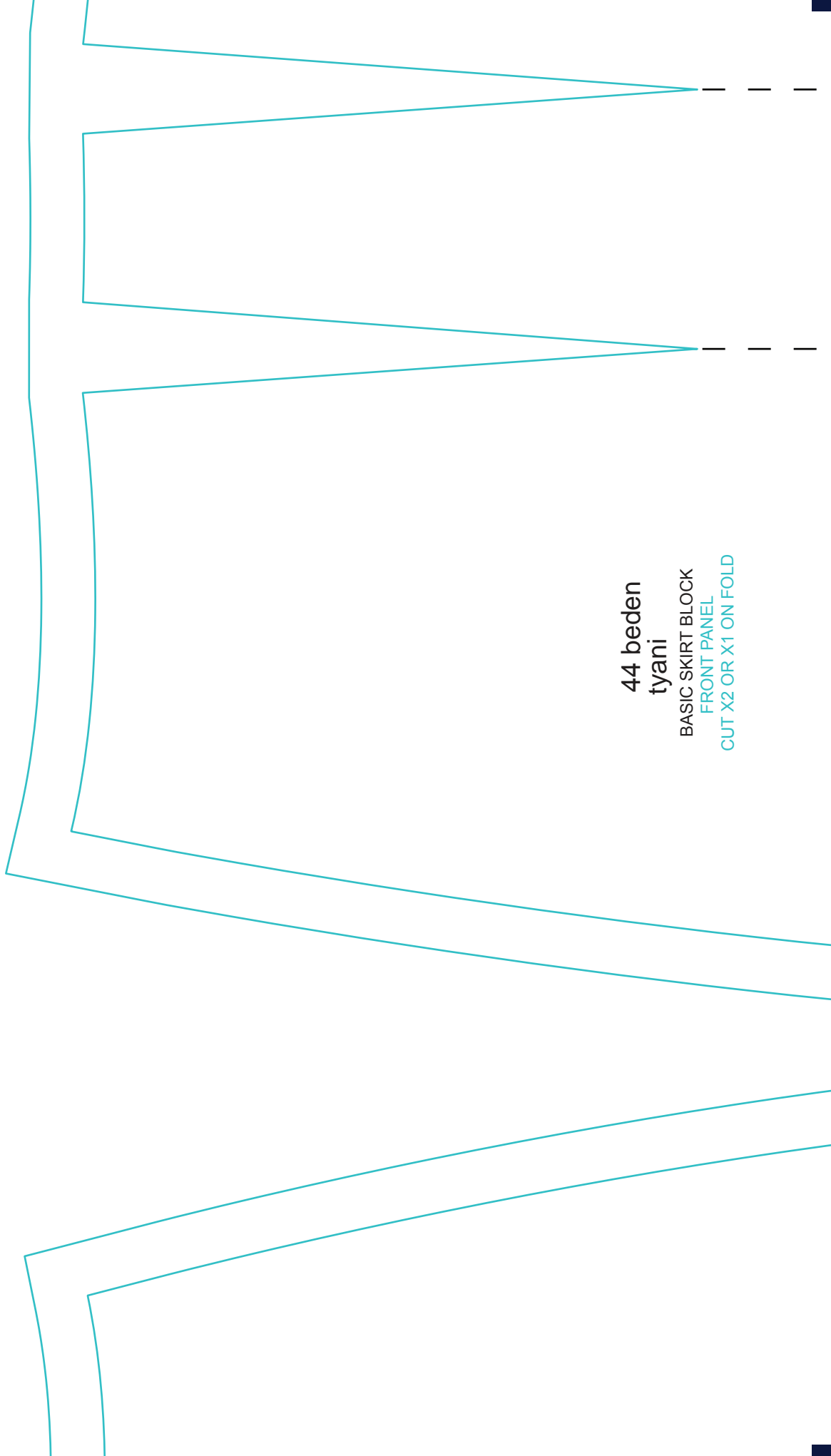
WAIST LINE



3F

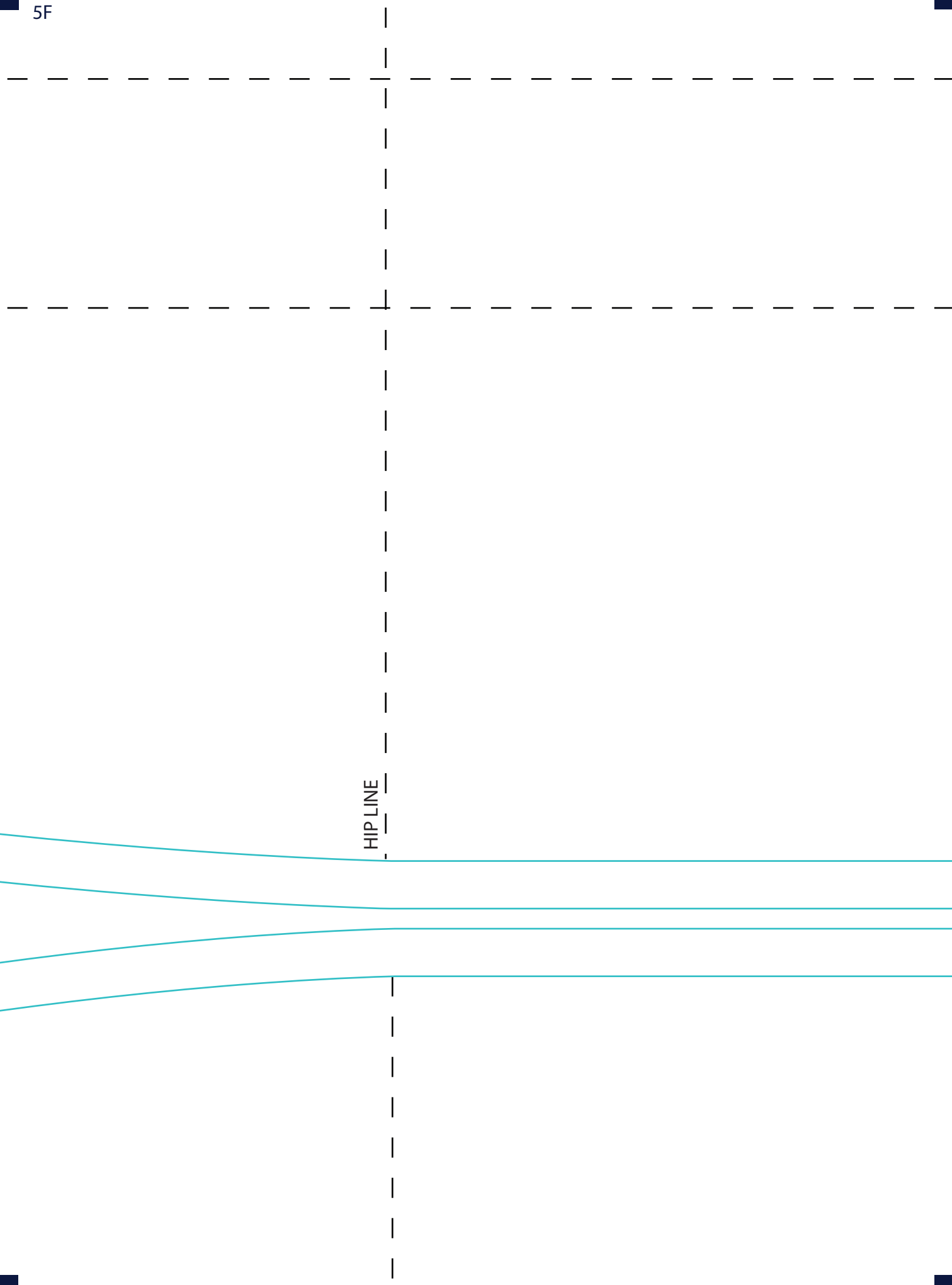
WAIST LINE





44 beden
tyani
BASIC SKIRT BLOCK
FRONT PANEL
CUT X2 OR X1 ON FOLD

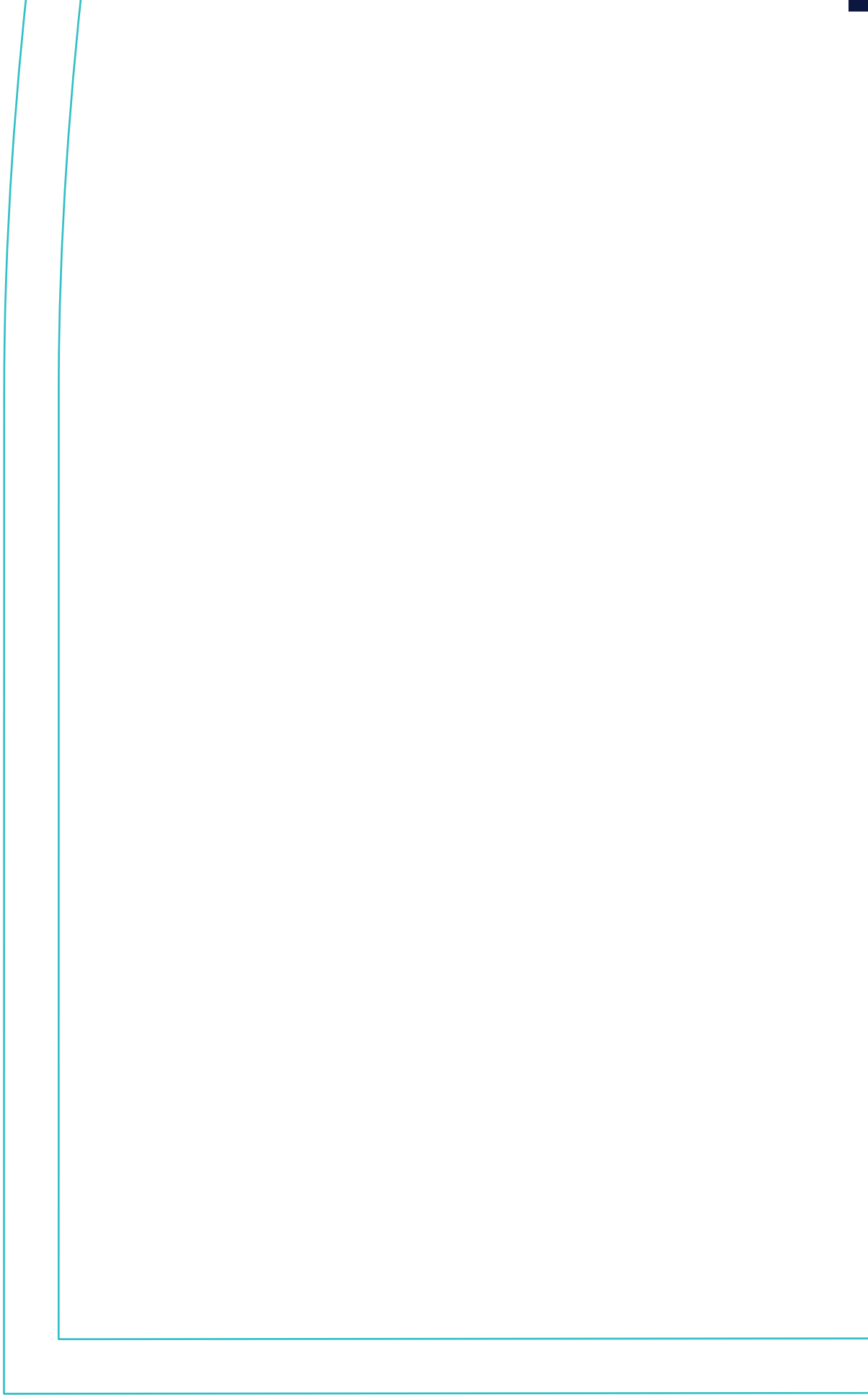
HIP LINE





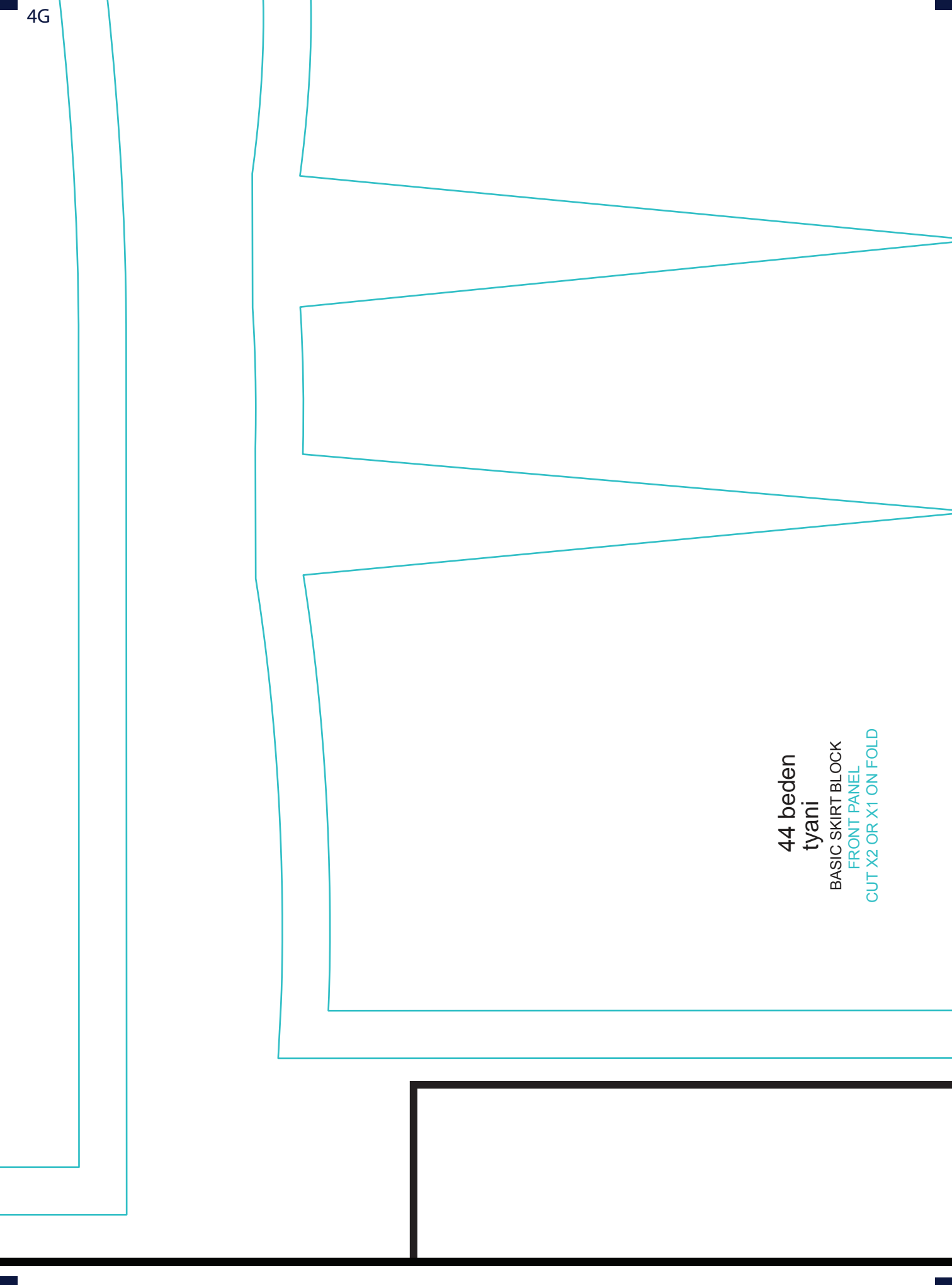
INCREASE LENGTH TO EXTEND SKIRT ▼

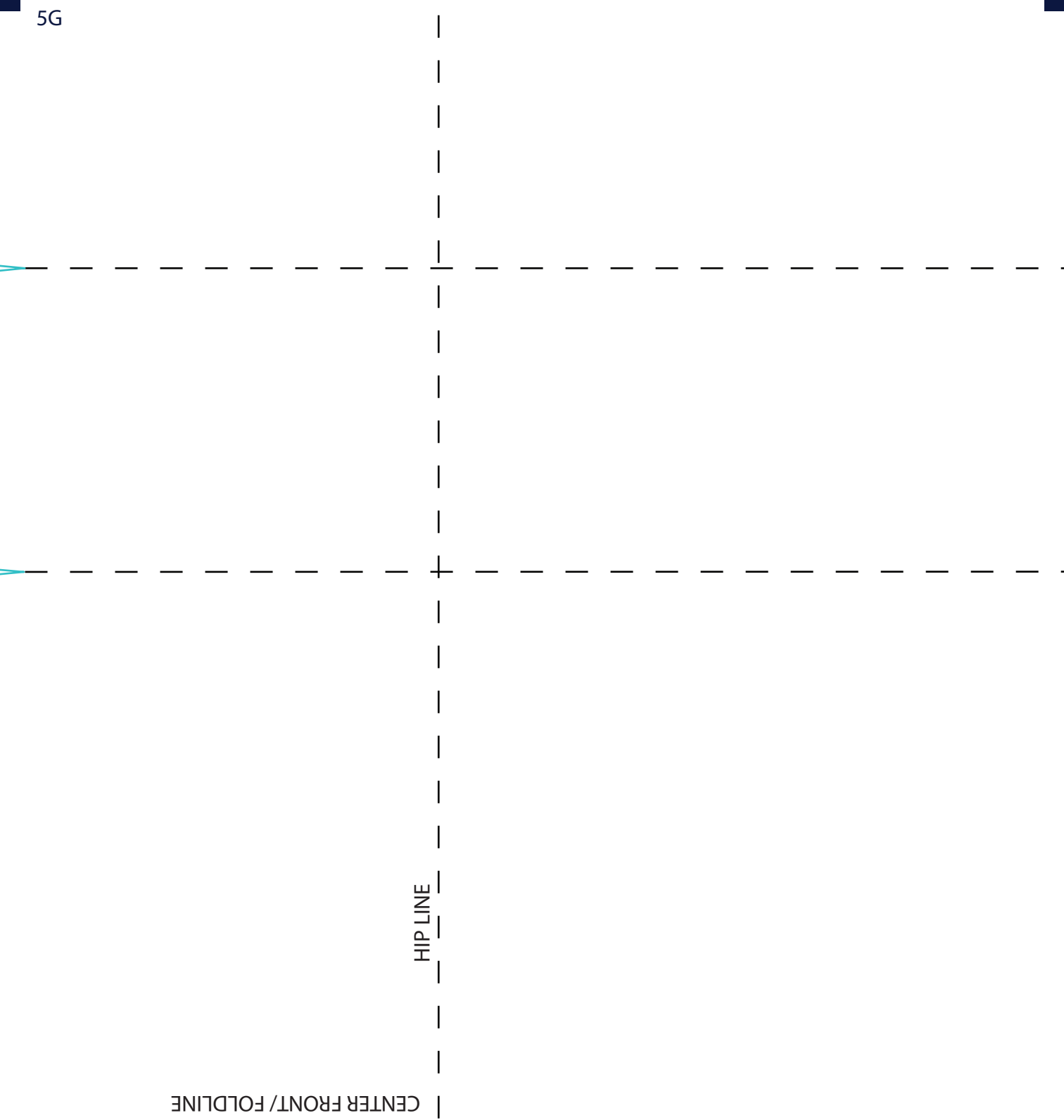
EASE LENGTH TO EXTEND SKIRT ▼





44 beden
tyani
BASIC SKIRT BLOCK
FRONT PANEL
CUT X2 OR X1 ON FOLD





44 Beden - Üst, elbise, kol, etek
ve pantolon TEMEL KALIPLARI
